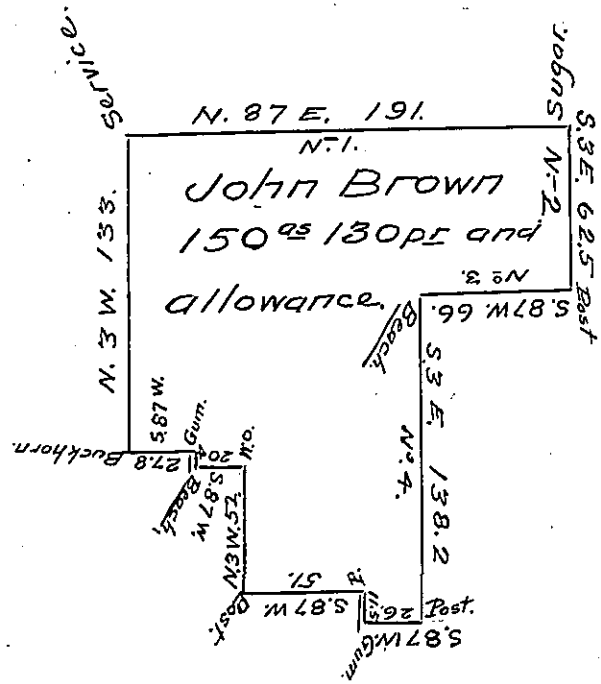


Part of same Tract.

Eliza Hiltzamer.

John McKeessick.



No.	Course.	Distance.
1.	N. 87 E. ---	191. Per.
2.	S. 3 E. --	62.5
3.	S. 87 W. --	66. -
4.	S. 3 E. --	138.2
5.	S. 87 W. --	26. -
6.	N. 3 W. --	11.5 -
7.	S. 87 W. --	51. -
8.	N. 3 W. --	52. -
9.	S. 87 W.	20. -
10.	N. 3 W.	4. -
11.	S. 87 W.	27.8
12.	N. 3 W.	133. -

The above is a draft of a tract of Land situate in Delaware Township Mercer County being the settlers share of a larger tract. (Surveyed in pursuance of a warrant granted to Mary Hiltzamer 31 March 1794) of 400 acres) Surveyed the 16<sup>th</sup> day of April 1825 By and with the Consent of Joseph Lyon Esq. Containing one hundred and fifty and 130 p<sup>s</sup> with the allowance of six per cent for Roads &c.

A. BROWN D.S.

Mercer County

To Jacob Spangler Esq. }  
S. G. }

IN TESTIMONY that the above is a copy of the original remaining on file in the Department of Internal Affairs of Pennsylvania, made conformably to an Act of Assembly approved the 16th day of February, 1833, I have hereunto set my Hand and caused the Seal of said Department to be affixed at Harrisburg, this Twenty eighth day of March 1905.

*James R. Brown*  
Secretary of Internal Affairs